



Española Public Schools Family Resource Guide 2019–2020

From the Superintendent's Desk...



Welcome to the 2019–20 school year. As we “kick-off” another new school year, the continued focus of the Española Public Schools is to provide excellence and equity in programs and services for all students, their families, and the community. We are happy to report that we are moved forward with restoring the fine and performing arts to our preK–12 curriculum, and reinstated Music at both the elementary and secondary levels. Our Legislators were especially good to us this past session and supported Española Public Schools with \$160,000 in capital outlay money for the purchase of band instruments and equipment. We are currently planning our first community event for October to showcase our band. Our work with visiting artists will also continue, and this past year more than 50 local and area artists working with students in our elementary schools.

We have also adopted our Core Academic Values and Practices PreK–12. Española Public Schools believes in teaching and learning which promotes critical thinking and is engaging and accessible to all. Districtwide academic values and practices should be evident in every classroom, at every grade level, ensuring that *all students* have access to an education that is meaningful and prepares them for a successful future.

This has been an extremely busy summer around the district. Contrary to what many people think, not everyone in the district takes a break from June–August. While some staff are off for a few weeks, our support staff uses this time to clean and repair facilities, renovate facilities,

make building improvements, install new technology, and the list goes on and on. In other areas, many of our teachers were busy teaching summer school, taking college classes, participating in professional development and training at both the local and state level, and writing curriculum.

Each school year brings new challenges and excitement, and new beginnings. I continue to get very excited as I begin another year as superintendent of schools in Española. We continue to push hard for additional resources and support for our students in EPS! Both our high school and middle school received grants that support teachers with training and our students with additional resources to be successful in school. Our Board of Education adopted its strategic plan, *Believe, Achieve, Succeed*, and they have five goals set forward for my staff and me to focus on. Board Goals include:

- ✓ **Board Goal 1**
Promote academic excellence by engaging all students, Pre-K through grade 12 and young adults, with a rigorous and relevant educational experience to prepare them for college and careers.
- ✓ **Board Goal 2**
Recruit, develop and retain highly effective district leaders, school leaders, teachers, and staff who are committed to achieving academic results and developing and maintaining positive relationships with students, parents, colleagues, and community.

- ✓ **Board Goal 3**
Foster a safe, inclusive and respectful school community that values the unique families, cultures and heritages reflected in our schools.
- ✓ **Board Goal 4**
Continually improve systems, operations, infrastructures, facilities, and technology to support student education.
- ✓ **Board Goal 5**
Expand wellness initiatives and programs to support the physical, mental, social, and emotional health and well-being of students in grades pre-K through grade 12.

Parents and families, I ask you to remember first and foremost, you are your child's first teacher, and it is important for you to be involved in their education by making academic achievement a priority, attending parent teacher conferences and school functions and activities. If you have any concerns regarding your child's education, please contact your child's teacher or principal right away to discuss the concerns. Remember that you are a critical member of your child's educational team.

For community members without children, our schools really need your involvement, and even small gestures can make huge differences for schools. Please consider volunteering at your neighborhood school. You can donate your coats

and winter wear you no longer need to our EPS HOPE and Foster Care Program. Our HOPE and Foster Care program assists families without a home, as well as our students in need of assistance. For volunteer information, please contact Anna Vargas-Gutierrez, our Assistant Director for Student Services and Wellness at (505) 367-3333, or your neighborhood school's counselor.

We have a very important organization that work to supplement school programs and initiatives. The Española Public Schools Education Foundation provides support for enrichment and specialized programs for schools and classrooms. Even though the Foundation is still in its toddler stages, it is quickly learning to run. The Foundation allows for charitable giving to programs at each of our school sites as well as district level programs. I ask you to consider making public education a priority in your charitable giving. I can think of no better investment in our future than the chil-

dren and young people of the Española community.

The beginning of every school year offers all of us an opportunity to renew our commitment to education, and I am calling on every single parent, family members and members of this community to help in having our Legislator make public education a priority and sufficiently fund education. Prior to the economic crisis, public education in New Mexico was underfunded by more than \$350 million, and during the past decade much needed funded from our state for public education has not been the priority of our elected officials. It will take all of our voices to impact change in this area and I implore of you to assist with these efforts in the 2019 Legislative session. Together, as community, we can make a difference for this generation of young people that deserves so much more, and it is our mission to help them to fully achieve their greatest academic potential.

I want to also invite parents and families to make use of the information in this publication, which includes the school calendar, sports calendar, dress code, and procedures for snow days, emergencies and much more. To keep up on EPS events and for more information on what is going on in our public schools, I invite you to visit our website at www.k12espanola.org Thank you in advance for working together in the 2019–20 school year to improve our lives through education as we strive for excellence.

Respectfully & Professionally,



Bobbie J. Gutierrez
Superintendent of Schools





Mission

~~~~~

“Española Public Schools, through family and community collaboration and partnerships engages all students in meaningful learning experiences.

These experiences will meet the highest academic and ethical standards in a caring, collaborative, creative, and safe learning environment.

## Vision

~~~~~

“Striving for Excellence.”

EPS Board of Education Members



Board President

Mr. Ruben Archuleta
405 Hunter St.
Española, NM 87532
(505) 901-3735 cell
ruben.archuleta@k12espanola.org



Board Vice President

Mrs. Yolanda M. Salazar
405 Hunter St.
Española, NM 87532
(505) 901-1622 cell
yolanda.salazar@k12espanola.org



Board Secretary

Mr. Gilbert A. Serrano
405 Hunter St.
Española, NM 87532
(505) 367-3323
gilbert.serrano@k12espanola.org



Board Member

Mr. Pablo E. Lujan
405 Hunter St.
Española, NM 87532
(505) 901-7014
pablo.lujan@k12espanola.org



Board Member

Mr. Matthew Pana
405 Hunter St.
Española, NM 87532
(505) 753-2254
matthew.pana@k12espanola.org

District 5

Alcalde Precinct #2
Chamita Precinct #5
El Guique Precinct #37
Velarde Precinct #38
San Juan Pueblo Precinct #41

District 1

Dixon Lower & Upper Precincts #1 & #6
Ranchitos (Fairview) Precinct #4
Chimayo Lower & Upper Precincts #13 & 14
Cordova Precinct #15
Truchas Precinct #16
Sombrillo (Santa Fe) Precinct #2

District 3

Santa Clara Precinct #7
San Pedro/La Mesilla Precincts #10 & #11
Sombrillo (Santa Fe) Precincts #1 & 59
Chimayo & Rio Chiquito (Santa Fe) Precincts #3 & #4

District 4

Española Precincts #8 & #9
Abiquiu and Canones Precincts #35 & #27
Hernandez and Ojo Caliente Precincts #36 & #32
Rio Chama Precinct #39

District 2

Española Precinct #12
Fairview Precincts #3 & #40
Santa Cruz (Santa Fe) Precincts #58 & #7

Española Valley Schools District Contact Information



Bobbie Gutierrez <i>Superintendent of Schools</i>	(505) 367-3303 bobbie.gutierrez@k12espanola.org
Marcel Povijua <i>Administrative Assistant to the Superintendent and Board of Education</i>	(505) 367-3323 marcel.povijua@k12espanola.org
Denise Johnston <i>Deputy Superintendent</i>	(505) 367-3312 denise.johnston@k12espanola.org
Daniel O. Romero <i>Chief Financial and Operations Officer</i>	(505) 367-3314 daniel.romero@k12espanola.org
Deirdra Montoya <i>Executive Director Student Services</i>	(505) 367-3341 deirdra.montoya@k12espanola.org
Myra Martinez, <i>Executive Director</i> <i>State Programs, Assessment & Accountability</i>	(505) 367-3330 myra.martinez@k12espanola.org
Esther Romero <i>Director Human Resources</i>	(505) 367-3317 ester.romero@k12espanola.org
Aaron Aragon <i>Director, Facilities & Maintenance</i>	(505) 367-3369 arron.aragon@k12espanola.org
Tito Ortiz <i>Director, Student Transportation</i>	(505) 367-3344 alejandro.ortiz@k12espanola.org
Patricia Romero <i>Director, Student Nutrition</i>	(505) 367-3345 patricia.romero@k12espanola.org
Andrew Trujillo <i>Director, Technology</i>	(505) 367-2223 andrew.trujillo@k12espanola.org
Don Lopez <i>Director, Safety & Security</i>	(505) 901-2568 donald.lopez@k12espanola.org
Ricardo Sanchez <i>Director, Indian Education</i>	(505) 367-3335 ricardo.sanchez@k12espanola.org
Holly Martinez <i>Director, Federal Programs & 21st Century Program</i>	(505) 367-3373 holly.martinez@k12espanola.org
Theresa Flores <i>Interim Athletic Director</i>	(505) 367-3401 theresa.flores@k12espanola.org
Fanny Castillo <i>Director, Bilingual Education</i>	(505) 367-3351 fanny.castillo@k12espanola.org

Bus Routes: EPS Area of Service

Contrator/Bus Owner	Bus#	Area of Service
Abiquiu Elementary		
Suazo Bus Service	59	Barranco, Pueblo de Abiquiu, Los Camino's to Rural Events Center, Ranchos de Abiquiu, La Carrera Sylvestres, Abiquiu Dam to Elementary
Española Public Schools	140	Lower and Upper Medanales, Dog legs at La Madera Arroyo to Abiquiu Elementary
Alcalde Elementary		
Española Public Schools	44	Lower Alcalde Rd. from Cottonwood Ranch to Alcalde Plaza, Main Highway from Cottonwood Ranch to Johnny's Barber Shop to Alcalde Elementary Los Lucero's, Tim's Trailer Court, La Villita Subdivision, Buena Vista Trailer Park, Delancy Street to Alcalde Elementary
Chimayo Elementary		
Española Public Schools	47	1st Trip a.m.—Truchas area—Llano Abeyta, Llano Quemado. Cordova area—CR80 along main road Rio Chiquito (Abbreviated route from previous years-not going into any drive ways/ consolidated bus stops) 2nd Trip a.m.—Dan's Liquor, CR87, CR89, CR96 (Dollar Store)
Española Public Schools	52	CR101; CR98; CR93; CR100, Apple Shed, Canada Ancha, Los Ranchos up to Santuario area to Fire Station
Dixon Elementary		
Española Public Schools	3	Dixon Area, Upper Cañoncito, Apodaca, Rinconada, Embudo
JHR-Española Elementary/Los Ninos		
Española Public Schools	119	All of Railroad Ave. from Apple Valley to Angelina's Restaurant; continuing to N. Prince Drive from Angel Duran Drive, and exiting the road at Garfield Gutierrez residence
Española Public Schools	35	Santa Clara East, West and South Housing—Centralized stops in each housing area TBD
Española Public Schools	126	Beginning S. Coronado at Cook's St. (1st stop), Calle Quintana, W. Filigonio, E. Filigonio Guachupangue CR2 (upper), Guachupange L.A. Hwy, Chavez St., Laguna, Hunter Street, Audra's Hair Salon, South Prince Dr., Turn Around at Hoy Recovery, Don Pedro/Sandoval, Borrego Bootery, Sangre de Cristo Trailer Park
ETS-Fairview Elementary		
MFI Transportation	59	EVHS to South El Llano beginning at Calle Duran-El Llano, Calle Redonda, Meadow Acres, Cañada Court, Calle de la Luz
L & L Transportation	45	EVHS along North El Llano Rd., onto North McCurdy Rd. stopping at Chacoma Vista, Day Lilly Ln., Calle Ramon Espinoza, Bellas Ln., Mtn. View St., Gordon Lane, Entrance to Valley Estates, (Duran St.-North McCurdy Rd.), Jemez View St, Birch Ln. North Orchard
Española Public Schools	114	Simmon's Lane, Middle Santa Cruz Road, Chacoma Vista Estates on N. McCurdy Road, also Special Needs
J.D. & Rita Martinez, LLC	15	Along SR. 68 both sides from Ranchitos along Riverside Drive including Cook's Trailer Crt., Checker Auto up to McDonald's, stops along Fairview Lane from Walgreens to 4-way stop signs.
Española Public Schools	130	La Joya St., East Pueblo, Ash Loop, Camino Arbolera, North SR76 at Lamb St., Pacheco Lane, South McCurdy Road at Calle Cielito Lindo, Quintana St., Martinez Lane, Calle Jose Merced, Kiva Lane



Contrator/Bus Owner	Bus#	Area of Service
Hernandez Elementary		
J.D. & Rita Martinez, LLC	24	US 84/285 North from Rio Chama Chevron (both sides) up to Medanales Turn-off to include Rio Chama & Rio Del Oso
J.D. & Rita Martinez, LLC	28	US 84/285 South of Rio Chama Chevron (both sides) to include Lolo's Tire Shop, Johnny's Alignment, Socorro's Restaunt, Padilla Fruit Stand up to old UPS building
San Juan Elementary		
Suazo Bus Service	42	Shadow Mtn., Lower Chamita, Ohkay Owingeh Pueblo, El Guique, to Estaca
Suazo Bus Service	10	Upper Chamita, Square Deal Bar, Sadie's Trailer Park, Gallegos Motors, Sesame St. & Yucca Lower Ranchitos Road, Swan Lake Road up to Delancy Street
Española Public Schools	109	Ranchitos, West & East of Highway 68, Mile Marker 3, West & East Kennedy, Sesame St. & Yucca St.
TEQ–Sombrillo Elementary		
Española Public Schools	141	Sombrillo area, David Dear Gallery, La Mesilla Area, Middle San Pedro Rd., Hamm Parkway
Española Public Schools	121	Beginning at Country Store headed East stopping along S.R.76 to La Puebla, El Sitio Rd, Arroyo Alamo West, Firehouse Rd, Placita Rd., head East on SR 76 stopping at Carmelito's Josephina Way, Dan's Liquor-turn around and head West stopping along SR 76 to TEQ Elem. (PM only stops): Santo Niño area to include Las Lomas Apts., Santo Niño Lane
Española Public Schools	127	Lower/Middle/Upper San Pedro, Valley Superette, Western Winds Motel, Pajarito Housing, Martini'z RV Park-Frank & Mary Ln. Sombrillo (AM only stops): Santo Niño to include Las Lomas Apts., Santo Niño Lane
Española Public Schools	125	Santo Nino Trailer Court, S. Corlett Rd. up to Lovin Oven, Indian Way Trailer Park (Santo Nino), El Llano South of EVHS (SF County only) Calle Redonda, Crisis Center
Velarde Elementary		
Yolanda Gasca	61	Lyden, Ruben Trailer Court, CR 0049, SR 68, Velarde Lyden, Up to Cottonwood Stop Sign (CR 39), CR 0041

Bus Routes: EPS Area of Service

Contrator/Bus Owner	Bus#	Area of Service
Española Valley High School, Carlos Vigil Middle School		
Suazo Bus Service	10	Abiquiu Area to include Carrera, Barranco, Tierra Azul up to Country Cross Roads, Rio Chama Lower Rd. (CR140), Rio Del Oso, US 84/285 South from Chili up to Chevron Gas Station
J.D. & Rita Martinez, LLC	24	Lower Medanales Rd. , CR 142/155 (Medanales) Rio Chama along 84/285, south up to Country Cross Rd. CR140; US 84/285 South from Chevron Gas Station up to Montoya Store. El Llano from Snow Bird Gas Station to EVHS for students attending CFVMS only.
J.D. & Rita Martinez, LLC	28	US 84/285 Hernandez S. of Rio Chama Chevron (both sides) to include Lolo's Tire Shop, Socorro's Restaurant, Padilla Fruit Stand up to old UPS building, N. Prince Drive from CR 0115 to R & E Glass
Española Public Schools	130	Cook's Trailer Court, West Pueblo Drive, to Best Way Realty, Sombrillo, Shady Lane, Walnut Dr., US 84/285, Upper San Pedro Road, Lovin' Oven, Santo Nino-Las Lomas, Santo Nino Ln, Lamb Street, Camino Santa Cruz, Pueblo MH Park (Old Vic's) S. McCurdy Rd. beginning at Holy Cross Church, Calle Tecolote, Camino Don Roberto, Martinez Lane, Calle Jose Merced, Zuni Lane, S. Orchard, N. Orchard
Española Public Schools	119	Truchas, Cordova, Chimayo–Stop at entrance to CR 88/100 on S.R. 76, S.R. 76–Dollar Store Cuarteles beginning at Josephina Way, Ramsey Ln., Dan & Son's, Cinco Hermano's/Quintana Tlr. Crt, Camino de Paz, Calle Adrian, El Paisiano Store
L & L Transportation	45	Rio Chiquito, Chimayo-Santuario, Firehouse, Los Ranchos, Appleshed, S.R. 76-Chimayo Trading Post, Orlando's Store, Post Office, and Holy Family Church, all of C.R. 87/90 stop at Virgil Mtz Arroyo (C.R.85), Carmelito's Muffler, Ramsey Ln. (aka DeAgüero Arroyo)
Española Public Schools	126	La Puebla from C.R.88D to upper Fire House Road, to Arroyo Alamo, Sombrillo area. Along both sides of Riverside drive, E. Pueblo, Monterey Ln., Old Hospital Rd., Merhege Ln., Mtn. View St., Calle Olivas, Chacoma Vista M.H. Park, Starlighter Loop
Española Public Schools	107	Rinconada, Dixon, Apodaca, Embudo, Velarde (middle rd. & La Cuchilla Rd.) Area, N. McCurdy Rd for CFV to include; Gallegos Ln, Bellas Ln., Mtn. View St., Valley Estates Ent., (Duran St.-North McCurdy Rd.) & Birch Lane
Suazo Bus Service	14	El Guique, Ancon, Lyden & La Canova, Alcalde (lower) CR 41 to La Joya, SR 68 South up to Cottonwood Ranch.
Española Public Schools	109	Alcalde along Hwy 68, beginning at Ruben's Fruit Stand, CR39 entrance, Casa Nova, La Tiendita drop-off at EVHS then continues S. of EVHS-El Llano Rd. for Carlos Vigil Middle School students only-Drop-off at CFVMS
Española Public Schools	125	Alcalde P.O. (Guillen's); Alcalde Fire Station, Old Alcalde Post Office, Delancy Street up to Ohkay Owingeh, Water Tank Ohkay Owingeh, Sesame St., East & West Kennedy
J.D. & Rita Martinez, LLC	15	Shadow Mountain and Chamita area
Española Public Schools	127	Sangre de Cristo MH park, Sacred Heart Church, Cook St., Don Filogonio, Guachupanque, Santa Clara Obsidian Rd., Santa Clara area with limited stops in East, West & South Housing, Railroad Ave.
Española Public Schools	141	La Mesilla Area, lower San Pedro, La Joya Street stopping just passed Villa de Norte stops at E. Pueblo, Megill Streets. Camino Arbolera

Española Valley High School Sports

Fall/Winter 2019–2020



4A District Varsity Football

(games at 7pm)

DATE	MATCH
Aug 14	Española @ Socorro (Scrimage)
Aug 23	Los Alamos @ Española
Aug 31	Española @ Hope Christian (6pm)
Sept 6	Española @ Santa Fe High
Sept 13	Gallup @ Española
Sept 20	Navajo Prep @ Española
Oct 4	Española @ Bernalillo
Oct 11	Taos @ Española
Oct 18	Grants @ Española
Oct 25	Española @ St. Pius
Nov 2	Pojoaque @ Española



4A District Boys/Girls Cross Country

DATE	MATCH
(all Sat.)	(all away)
Aug 24	EVHS (Scrimmage)
Aug 31	UNM Invite
Sept 7	Peñasco
Sept 14	Taos
Sept 28	Capital City
Oct 5	Los Lunas
Oct 12	Northern NM Challenge
Oct 19	Rio Rancho
Oct 25	Los Alamos

4A District Varsity Volleyball

DATE	MATCH	TEAM
Sept 6–7	Española @ Piedra Vista	C, JV & V
Sept 10	Española @ Belen	C, JV & V
Sept 12	Española @ Bloomfield	C, JV & V
Sept 20–21	Española @ Rio Rancho	JV
Sept 23	Española @ West Las Vegas	C, JV & V
Sept 24	Española @ Aztec	C, JV & V
Sept 27–28	Española @ Rio Rancho	C, JV & V
Oct 1	Pojoaque @ Española	C, JV & V
Oct 3	Española @ Moriarty	C, JV & V
Oct 8	Los Alamos @ Española	C, JV & V
Oct 12	Capital @ Española	C, JV & V
Oct 15	Española @ Taos	C, JV & V
Oct 17	Española @ Pojoaque	C, JV & V

4A District Boys Basketball

DATE	MATCH	TEAM
	(all games at 4pm unless TBD)	
Dec 3	Española @ Bernalillo	V, JV, C
Dec 5–7	Española @ Sandia Prep Tour (TBD)	V
Dec 10	Santa Fe Indian @ Española	V, JV, C
Dec 12–14	Española @ Al Armendariz Tour (TBD)	V
Dec 12–14	Española @ Santa Fe Indian Tour (TBD)	JV, C
Dec 17	Valencia @ Espanola	V, JV, C
Dec 21	Miyamura @ Española	V, JV, C
Dec 26–28	Española @ Rio Rancho Tour (TBD)	V
Jan 7	Belen @ Española	V, JV, C
Jan 9	Española @ Gallup	V, JV, C
Jan 14	Grants @ Española	V, JV, C
Jan 16	Santa Fe @ Española	V, JV, C
Jan 18	Española @ Capital	V, JV, C
Jan 23	Pojoaque @ Española	V, JV, C
Jan 25	Española @ Moriarty	V, JV, C
Jan 28	Los Alamos @ Española	V, JV, C
Feb 6	Española @ Taos	V, JV, C
Feb 8	Española @ Pojoaque	V, JV, C
Feb 12	Moriarty @ Española	V, JV, C
Feb 14	Española @ Los Alamos	V, JV, C
Feb 22	Taos @ Española	V, JV, C

4A District Girls Basketball

DATE	MATCH	TEAM
Dec 3	Española @ SFIS	C, JV & V
Dec 5–7	Española @ Capital City Tournament	C, JV & V
Dec 12–14	Española @ Rio Rancho Tourney	V
Dec 12–14	Española @ SFIS	C & JV
Dec 17	Española @ Valencia	C, JV & V
Dec 20	Miyamura @ Española	C, JV & V
Dec 27–28	Española @ St. Mike's Tourney	C, JV & V
Jan 4	Los Lunas @ Española	C, JV & V
Jan 9	Santa Fe @ Española	C, JV & V
Jan 11	Kirtland Central @ Española	C, JV & V
Jan 15	Belen @ Española	C, JV & V
Jan 17	Española @ Capital	C, JV & V
Jan 18	Gallup @ Española	C, JV & V
Jan 21	Española @ Pojoaque	C, JV & V
Jan 24	Moriarty @ Española	C, JV & V
Jan 30	Española @ Los Alamos	C, JV & V
Feb 4	Taos @ Española	C, JV & V
Feb 7	Pojoaque @ Española	C, JV & V
Feb 13	Española @ Moriarty	C, JV & V
Feb 15	Los Alamos @ Española	C, JV & V
Feb 21	Española @ Taos	C, JV & V

Our Schools

Abiquiu Elementary School

Home of the Cougars



Physical Address:

Highway 84, Gate 21342
Abiquiu, NM 87510
Telephone: 505-685-4457
Fax: 505-685-4644

Mailing Address:

P.O. Box 727
Abiquiu, NM 87510

Enrollment: 120 Students

Serves: Kindergarten – Grade 6

2018 School Grade from the NM Public Education Department: B

Special Programs: Fine and Performing Arts Education Program; K-3 Plus Program; Title I After School Tutoring; Boys & Girls Club On-site Afterschool Program; Inquiry Based Science Education; Science Bowl; Student Council; Chess Program (for students in grades 4-6)

School Supplies and Dress Code:

Uniform dress is required of all Abiquiu Elementary School students. Please visit our District website at k12espanola.org and click on the students/parents link. This will take you to a school supplies/dress code link, by individual school.

Principal: Fanny Castillo
fanny.castillo@k12espanola.org

Office Manager: Ashley Noe
ashley.noe@k12espanola.org

Counselor: Theresa Bustos
theresa.bustos@k12espanola.org



Alcalde Elementary School

Home of the Leopards



Physical Address:

State Road 68, County Road 138A
Alcalde, NM 87511
Telephone: 505-852-4253
Fax: 505-852-2523

Mailing Address:

P.O. Box 219
Alcalde, NM 87511

Enrollment: 195 Students

Serves: Pre-kindergarten – Grade 6

2017 School Grade from the NM Public Education Department: D*

Special Programs: Full-day Pre-K Program; Fine and Performing Arts Education Program; K-3 Plus Program; 21st Century Community Learning Center (after school) Program; Title I Summer School; National Dance Institute (NDI); Student Council; Inquiry Based Science Education

School Supplies and Dress Code:

Uniform dress is required of all Alcalde Elementary School students. Please visit our District website at k12espanola.org and click on the students/parents link. This will take you to a school supplies/dress code link, by individual school.

Principal: Kiva Duckworth-Moulton
kivan.duckworth@k12espanola.org

Office Manager: Teri Medina
teri.medina@k12espanola.nm

Counselor: Leonard Quintana
leonard.quintana@k12espanola.org



Carlos F. Vigil Middle School

Home of the Cardinals



Physical and Mailing Address:

1260 Industrial Park Road
Española, NM 87532
Telephone: 505-753-1348
Fax: 505-747-3083

Enrollment: 483 Students

Serves: Grade 7 – 8

2017 School Grade from the NM Public Education Department: F**

Special Programs: 21st Century Community Learning Center (after school) Program; Title I Summer School; Three Rivers Tutoring Program; Building Communities that Support Children's Reading; Mathematics, Engineering, Science Achievement (MESA); Student Council; Chess Club; Natural Helpers; New Mexico Electric Car Challenge; Science Quiz Bowl; Science Fair; Future City; Advancement via Individual Determination (AVID), New Mexico Public Education Department 3-year Comprehensive School Improvement Grant

Dress Code:

Tops/Shirts

- Colors: Most solid colors (no purple or red)
- Knit polo-type, Oxford or woven dress shirt with collar allowed; cannot be ripped or torn
- Must have long or short sleeves (no sleeveless)
- Oversized or overly tight shirts are not allowed; midriff must be covered at all times
- No tobacco or alcohol related logos or gang affiliated symbols which include but are not limited to, "In Loving Memory," Player 69, Playboy, etc.
- No tank tops, midriff or spaghetti straps

- Jackets/sweaters: white, navy blue, black, khaki; only EPS/school logo patches, embroidery or writing allowed

Bottoms

- Pants, shorts, capris, and skirts—must be plain, solid color; cannot be ripped or torn; Brown pants, jeans or cargo pants are not allowed
- Sagging or baggy pants and overly tight pants, shorts and skirts are not allowed
- Shorts and skirts—no shorter than 4 inches above the knee
- Patches, embroidery, writing, and markings of any kind are not allowed

Other Dress Code Rules

- Long belts are not allowed (belt colors: black, blue or khaki)
- Underwear must not show/be visible at anytime
- Backpacks must be a plain solid color

Principal: Cliff Tompson
cliff.tompson@k12espanola.org

Asst. Principal: Randall Houk
randall.houk@k12espanola.org

Office Manager: Naomi Carrasco
naomi.carrasco@k12espanola.org

Receptionist: Felicia Lopez
felicia.lopez@k12espanola.org

Dean of Students: Veronica Dean-Montoya
veronica.dean@k12espanola.org

Counselor: Denise Lopez
denise.lopez@k12espanola.org

Counselor: Jocelyn Herzog
jocelyn.herzog@k12espanola.org



Chimayo Elementary School

Home of the Tigers



Physical Address:

State Road 76, County Road 93
Building 31
Chimayo, NM 87522
Telephone: 505-351-4207
Fax: 505-351-9962

Mailing Address:

P.O. Box 3219
Fairview, NM 87533

Enrollment: 130 Students

Serves: Kindergarten – Grade 6

2017 School Grade from the NM Public Education Department: A

Special Programs: Fine and Performing Arts Education Program; K-3 Plus Program; Title I After School Tutoring; Title 1 Summer School Program; National Dance Institute (NDI); Boys & Girls Club On-site Afterschool Program; Student Council; Three Rivers Tutoring Program; Building Communities that Support Children's Reading; Inquiry Based Science Education

School Supplies and Dress Code:

Uniform dress is required of all all Chimayo Elementary School students. Please visit our District website at k12espanola.org and click on the students/parents link. This will take you to a school supplies/dress code link, by individual school.

Head Teacher: Janet Malcom
janet.malcom@k12espanola.org

Office Manager: Darlene Montoya
darlene.montoya@k12espanola.org

Counselor: LaDonna Phillips
ladonna.phillips@k12espanola.org



Dixon Elementary School

Home of the Rattlers



Physical Address:

220 Highway 75
Dixon, NM 87527
Telephone: 505-579-4325
Fax: 505-579-4049

Mailing Address:

1260 Industrial Park Road
Española, NM 87532

Enrollment: 55 Students

Serves: Kindergarten – Grade 6

2017 School Grade from the NM Public Education Department: B

Special Programs: Fine and Performing Arts Education Program; K-3 Plus Program; Student Council; Title I After School Tutoring; Inquiry Based Science Education

School Supplies and Dress Code:

Uniform dress is required of all Dixon Elementary School students. Please visit our District website at k12espanola.org and click on the students/parents link. This will take you to a school supplies/dress code link, by individual school.

Head Teacher: Alice Gonzales
alice.gonzales@k12espanola.org

Office Manager: Laverne Medina
laverne.medina@k12espanola.org

Counselor: Leonard Quintana
leonard.quintana@k12espanola.org



Española Valley High School

Home of the Sundevils

**Physical Address:**

1111 El Llano Road
Española, NM 87532
Telephone: 505-753-7357
Fax: 505-747-1797

Mailing Address:

P.O. Box 3039
Fairview, NM 87533

Enrollment: 894 Students

Serves: Grades 9 – 12

2017 School Grade from the NM Public Education Department: C**

Special Programs: Freshman Academy; Student Council; ROTC; Mathematics, Engineering, Science Achievement (MESA); Distributive Education Clubs of America (DECA); Advancement via Individual Determination (AVID); National Honor Society

Dress Code: Students are expected to dress in an appropriate manner that does not create a safety or health hazard or cause any disruptive influence on other students in and around the school.

- No clothing or accessories which depict/promote violence, sex, alcohol, tobacco, foul language, or gangs
- No clothing which makes exhibitionist display of the body; all tops must have a solid front, back, sides, and straps at least one inch wide
- No shorts or extremely short skirts (must be approximately fingertip length when arms are at sides)
- No halter, see-through, muscle shirts; no shirts that show the abdominal region when arms are raised



- No showing of underwear; suspenders and bib overalls must have both straps properly fastened
- No extremely long belts
- No sunglasses or headgear (hats, bandanas, hairnets, etc.)
- Students must wear footwear at all times
- Pants must be worn at the waist and must not ride lower than the hipbone

Principal: Victoria Gonzales
victoria.gonzales@k12espanola.org

Asst. Principal: TBD

Interim Athletic Director: Theresa Flores
theresa.flores@k12espanola.org

Athletic Secretary: t.b.a.

Office Manager: Vicki Martinez
vicki.martinez@k12espanola.org

Registrar: Yvonne Barros
yvonne.barros@k12espanola.org

Bookkeeper: Sandra Maestas
sandra.maestas@k12espanola.org

Attendance Clerk: Priscilla Medina
priscilla.medina@k12espanola.org

9th Grade Counselor: Stephanie Garduno
stephanie.garduno@k12espanola.org

10th Grade Counselor: Evelyn Martinez
evelyn.martinez@k12espanola.org

11th Grade Counselor: Landen-Elliott Knaggs
landen.elliott-knaggs@k12espanola.org

12th Grade Counselor: Marcella Maestas
marcella.maestas@k12espanola.org

Eutimio “Tim” Salazar III Fairview Elementary School

Home of the Gophers

**Physical Address:**

719 Calle Hacienda
Española, NM 87532
Telephone: 505-753-2391
Fax: 505-753-2392

Mailing Address:

P.O. Box 3219
Fairview, NM 87533

Enrollment: 416 Students

Serves: Pre-kindergarten – Grade 6

2017 School Grade from the NM Public Education Department: D

Special Programs: Full-day Pre-K Program; Fine and Performing Arts Education Program; K-3 Plus Program; 21st Century Community Learning Center (after school) Program; Title I Summer School; National Dance Institute (NDI); Student Council; Inquiry Based Science Education

School Supplies and Dress Code:

Uniform dress is required of all all ETS-Fairview Elementary School students. Please visit our District website at k12espanola.org and click on the students/parents link. This will take you to a school supplies/dress code link, by individual school.

Principal: Wilmer Chavarria
wilmer.chavarria@k12espanola.org

Office Manager: Carolina Gallegos
carolina.gallegos@k12espanola.org

Counselor: Monique Rivera
monique.rivera@k12espanola.org

• • • • •

Hernandez Elementary School

Home of the Pirates



Physical and Mailing Address:

State Road 84/285 #1934B
Hernandez, NM 87532
Telephone: 505-753-4008
Fax: 505-753-8381

Enrollment: 88 Students

Serves: Kindergarten – Grade 6

**2017 School Grade from the NM Public
Education Department:** D

Special Programs: Fine and Performing Arts Education Program; K–3 Plus Program; 21st Century Community Learning Center (after school) Program; Title I Summer School; National Dance Institute (NDI); Student Council; Inquiry Based Science Education

School Supplies and Dress Code:

Uniform dress is required of all Hernandez Elementary School students. Please visit our District website at k12espanola.org and click on the students/parents link. This will take you to a school supplies/dress code link, by individual school.

Principal: Diane Lund
diane.lund@k12espanola.org

Office Manager: Iris Eguino
iris.eguino@k12espanola.org

Counselor: Theresa Bustos
theresa.bustos@k12espanola.org

James H. Rodriguez Elementary School

Home of the Redbirds



Physical and Mailing Address:

420 N. Coronado Avenue
Española, NM 87532
Telephone: 505-753-2256
Fax: 505-753-2257

Enrollment: 370 Students

Serves: Grades 1 –6

**2017 School Grade from the NM Public
Education Department:** D

Special Programs: Fine and Performing Arts Education Program; K–3 Plus Program; 21st Century Community Learning Center (after school) Program; Title I Summer School; National Dance Institute (NDI); Student Council; Inquiry Based Science Education

School Supplies and Dress Code:

Uniform dress is required of all James H. Rodriguez Elementary School students. Please visit our District website at k12espanola.org and click on the students/parents link. This will take you to a school supplies/dress code link, by individual school.

Principal: Julie Gutierrez
julie.gutierrez@k12espanola.org

Office Manager: Desiree Chavez
desiree.chavez@k12espanola.org

Counselor: Michelle R. Martinez
micheller.martinez@k12espanola.org

Los Niños Kindergarten Center

Home of the Dolphins



Physical and Mailing Address:

323 Coronado Avenue
Española, NM 87532
Telephone: 505-753-6819
Fax: 505-753-3477

Enrollment: 117 Students

Serves: Pre-kindergarten – Kindergarten

**2017 School Grade from the NM Public
Education Department:** B

Special Programs: Full-day Pre-K Program; Fine and Performing Arts Education Program; K–3 Plus Program

School Supplies and Dress Code:

Uniform dress is required of all Los Niños Kindergarten Center students. Please visit our District website at k12espanola.org and click on the students/parents link. This will take you to a school supplies/dress code link, by individual school.

Principal: Kelly Miller
kelly.miller@k12espanola.org

Office Manager: Julianna Garcia
julianna.garcia@k12espanola.org

Counselor: Theresa Bustos
theresa.bustos@k12espanola.org

Accountability – School Grading and Designation

****Comprehensive Support and Improvement (CSI):** To be identified as in need of Comprehensive Support and Improvement (CSI): the school is in the lowest-performing five percent of the Title I schools or is a high school where at least one-third of the students are not graduating on time.

***Targeted Support and Improvement (TSI):** To be identified as in need of the Targeted Support and Improvement (TSI) and

one or more subgroups of students (for example race/ethnicity) are performing significantly lower than the rest of the student population.

A school's designation, if applicable, is noted next to its overall letter grade.

Please note school grading lagged one year behind reporting period effective for the 2019–20 school year the school grading in the State of New Mexico has been discontinued.

San Juan Elementary School

Home of the Dragons



Physical and Mailing Address:

411 State Road 74
Ohkay Owingeh, NM 87566
Telephone: 505-852-4225
Fax: 505-367-2340

Enrollment: 302 Students

Serves: Kindergarten – Grade 6

**2017 School Grade from the NM Public
Education Department:** D

Special Programs: Fine and Performing Arts Education Program; K–3 Plus Program; 21st Century Community Learning Center (after school) Program; Title I Summer School; National Dance Institute (NDI); Student Council; Inquiry Based Science Education

School Supplies and Dress Code:

Uniform dress is required of all San Juan Elementary School students. Please visit our District website at k12espanola.org and click on the students/parents link. This will take you to a school supplies/dress code link, by individual school.

Principal: Christine Baca
christine.baca@k12espanola.org

Office Manager: Mariah Moya
mariah.moya@k12espanola.org

Counselor: Leona Talachy
leona.talachy@k12espanola.org

• • • • •

Tony E. Quintana Elementary School

Home of the Vikings



Physical Address:

20 East Sombrillo Road
Hiughway 106
Española, NM 87532
Telephone: 505-753-3213
Fax: 505-747-3772

Mailing Address:

1260 Industrial Park Road
Española, NM 87532

Enrollment: 234 Students

Serves: Kindergarten – Grade 6

**2017 School Grade from the NM Public
Education Department:** F**

Special Programs: Fine and Performing Arts Education Program; K–3 Plus Program; 21st Century Community Learning Center (after school) Program; Three Rivers Tutoring Program: Building Communities that Support Children's Reading; Title I Summer School; National Dance Institute (NDI); Student Council; Inquiry Based Science Education

School Supplies and Dress Code:

Uniform dress is required of all Tony E. Quintana Elementary School students. Please visit our District website at k12espanola.org and click on the students/parents link. This will take you to a school supplies/dress code link, by individual school.

Principal: Sherri Rodriguez
sherri.rodriguez@k12espanola.org

Office Manager: Lori Duran
lori.duran@k12espanola.org

Counselor: LaDonna Phillips
ladonna.phillips@k12espanola.org

• • • • •

Velarde Elementary School

Home of the Panthers



Physical Address:

State Road 68, County Road 51, #14
Velarde, NM 87582
Telephone: 505-852-4331
Fax: 505-852-2993

Mailing Address:

1260 Industrial Park Road
Española, NM 87532

Enrollment: 51 Students

Serves: Kindergarten – Grade 6

**2017 School Grade from the NM Public
Education Department:** F

Special Programs: Fine and Performing Arts Education Program; K–3 Plus Program; Title I After School Tutoring; Three Rivers Tutoring Program: Building Communities that Support Children's Reading; Student Council; Inquiry Based Science Education

School Supplies and Dress Code:

Uniform dress is required of all Velarde Elementary School students. Please visit our District website at k12espanola.org and click on the students/parents link. This will take you to a school supplies/dress code link, by individual school.

Principal: Dorothy ("Dee Dee") Valdez
dorothy.valdez@k12espanola.org

Office Manager: Yolanda Gasca
yolanda.gasca@k12espanola.org

Counselor: Leonard Quintana
leonard.quintana@k12espanola.org

• • • • •

District Uniform Guidelines

SCHOOL	SHIRTS/TOPS	PANTS/BOTTOMS	OTHER NOTES
Española Valley High School	<p>EPS STANDARD DRESS CODE (See EPS Dress Code Policy)</p> <p>Students are expected to dress in an appropriate manner that does not create a safety or health hazard or cause any disruptive influence on other students in and around the school.</p> <ol style="list-style-type: none"> No clothing or accessories which depict/promote violence, sex, drugs, alcohol, tobacco, foul language or gangs. No article of clothing which makes exhibitionist display of the body. All tops must have a solid front, back, sides, and straps at least one inch wide No short shorts or extremely short skirts (must be approximate fingertip length); No Halters, see-through, muscle shirts (shirts cut well below the arm pit), or off the shoulder tops; shirts that show the abdominal region when arms are raised; No showing of underwear; and Suspenders; and bib overalls must have both straps properly buttoned. No extremely long belts; sunglasses and headgear (hats, bandanas, hairnets, etc.). Students must wear footwear at all times. Pants must be worn at the waist and must not ride lower than the hipbone. 		
Carlos F. Vigil Middle School	<p>Colors: White, Dark Green, Black, Light Grey or Navy Blue (NO Purple or Red) Style:</p> <ul style="list-style-type: none"> Knit polo-type, Oxford or woven dress shirts with collar Must have long or short sleeves Oversized or overly tight shirts are not allowed Must be plain, solid color <p>Restrictions:</p> <ul style="list-style-type: none"> No gang affiliated clothing or symbols which include but are not limited to: "In Loving Memory", Player 69, Playboy, Low-rider etc. No tank tops or spaghetti straps <p>Jackets / Sweaters:</p> <p>White, Navy Blue, Black, Khaki or EPS School Logo</p> <ul style="list-style-type: none"> Must be plain, solid color No gang affiliated symbols Only EPS School Patches, embroidery, writing or markings are allowed All others must be plain solid color 	<p>Colors: Khaki / Tan, Black or Navy Blue Style:</p> <ul style="list-style-type: none"> Pants, shorts, capris and skirts Student cannot wear brown pants, jeans, Levis or cargo pants Sagging or baggy pants and overly tight pants / shorts / skirts are not allowed. Shorts or skirts—no shorter than 4 inches above or 4 inches below the knee Must be plain, solid color Patches, embroidery, writing or markings of any kind are not allowed. 	<p>*Other Dress Code Rules</p> <ul style="list-style-type: none"> Long belts are not allowed (Belt colors allowed: Black, Blue or Khaki) Underwear must not show/be visible at any time Clothing cannot be ripped or torn and the midriff must be covered at all times Backpacks must be plain solid color—Black, White, Navy Blue or Brown <p>*NO HATS/CAPS ALLOWED ON SCHOOL GROUNDS*</p> <p>NO CASUAL FRIDAYS</p>
Abiquiu Elementary <i>A uniformly dress code encourages students to express their individuality through personality and academic achievements, not outward appearances. The following is the uniformly dress code for Abiquiu Elementary.</i>	<p>*Tops/Shirts</p> <ul style="list-style-type: none"> Must be collared Any color either solid or stripes are permitted No letterings or designs Must have sleeves, no muscle shirts, tank tops or spaghetti straps. <p>*Students who do not follow dress codes rules will be asked to change, parents may be asked to bring a proper change of clothing. Repeat offenses will follow the school discipline plan.</p>	<p>*Bottoms</p> <ul style="list-style-type: none"> Pants, any color, with pockets, (no leggings, gym shorts or sweatpants) Denim is allowed Skirts, dresses or shorts must be longer than fingertip length when hands are at sides 	<p>*Other Dress Code Rules</p> <ul style="list-style-type: none"> Long belts are not allowed Clothing must fit properly, not overly tight or overly baggy Underwear must not show through clothing or be visible at any time Clothing cannot be ripped or torn and the midriff must be covered at all times Large facial piercings are strongly discouraged Students cannot wear open toed shoes and flip flops

SCHOOL	SHIRTS/TOPS	PANTS/BOTTOMS	OTHER NOTES
Alcalde Elementary <i>Uniform dress is required of ALL Alcalde Elementary students.</i>	Shirts/Tops: any solid color collared shirt. No stripes, prints or logos. Shirts must fit properly, no baggy, tight, sleeveless or midriff tops.	Pants/Shorts/Capri/Jumper/Skirt colors are: Navy, Khaki, and Black. Tight, baggy or sagging pants will not be allowed, No excess fit at the waist, length or width. No excess belt length hanging.	Uniforms must fit properly. No tight fitting or oversized clothing will be allowed. Shorts, skirts, jumpers must not be shorter than the point where the longest finger extends when standing up straight.
Chimayo Elementary	<p style="text-align: center;">EPS STANDARD DRESS CODE (See EPS Dress Code Policy)</p> <p>The dress code will apply to all students except where there are specific instructional, safety, religious, or medical reasons. In general no gang related clothing, sunglasses, hair nets, bandanas or caps. No clothing accessories which promote negative behaviors (profanity, violence, sex, drugs, alcohol, tobacco, bigotry, disrespect or gangs) or are highly disruptive, revealing or immodest.</p> <ol style="list-style-type: none"> 1. Pants must be worn at the waist and must not ride lower than the hipbone. 2. NO article of clothing which makes exhibitionist display of the body. ALL tops must have a solid front, back sides, and straps at least one inch wide. 3. NO shorts or extremely short shirts (must be approximately fingertip length); NO halters, see-through, muscle shirts (shirts cut well below the arm pit), or off the shoulder tops. NO showing of underwear and suspenders must have both straps properly buttoned. No extremely long belts, sunglasses and headgear (hats, bandanas, hairnets and etc.). 4. Students must wear footwear at all times. 5. Outerwear: If a jacket is worn indoors it is to remain open. Color codes do not apply to outerwear. 6. Footwear: No color restrictions, however, appropriate shoes for play and movement are required. 		
Dixon Elementary	<p style="text-align: center;">EPS STANDARD DRESS CODE (See EPS Dress Code Policy)</p> <p>Once again we have adopted a casual dress code for all students this year. Please note that any deviation from what is considered appropriate attire by our staff will not be allowed. We are requesting your support in upholding our appropriate standards in dress. If you have any questions please feel free refer to EPS Standard Dress Policy, or contact the school administrator.</p>		
Eutimio Salazar Elementary	<p>Style: Polo style or dress shirt with collar and sleeves, or turtle neck. Sweaters/sweater vests are allowable, must be worn over a uniform collared shirt.</p> <p>Color: Any solid colored. NO STRIPES / NO LOGOS / NO GRAPHICS</p> <p>Guidelines: Shirts must be collared. Must fit properly, no midriff, no sleeveless. Must be plain, solid colored, no logos. Must be buttoned appropriately, no low cut or exposed undershirts.</p>	<p>Style: Plain or Docker style Pants, capris, shorts, jumpers, skirts, and skorts (length must be appropriate)</p> <p>Color: Solid colored navy, black, khaki, or tan</p> <p>Guidelines: Plain or Docker style (pleated or flat front) bottoms. Straight-legged, regular cut-no extra wide legs, no dropped crotch or cargo pants. Fitted at the waist, must be appropriate size (hemmed if necessary, no cuffing). Worn with optional black or brown belt, NO excess belt hanging.</p>	<p>Casual Friday Note: <i>Optional plain style blue jeans (must fit appropriately) and ETS Fairview T-Shirts (or regular uniform shirt) may be worn on Friday's ONLY!!!</i></p> <p>Special Occasion: <i>(Such as picture day or awards assemblies) Dress up clothing must be appropriate. No midriff shirts, spaghetti straps, halter tops, excessively baggy or inappropriate clothing will be allowed.</i></p> <p>Shoes: <i>Appropriate, close-toed shoes must be worn (no flip flops)</i></p>
Hernandez Elementary	<p style="text-align: center;">EPS STANDARD DRESS CODE (See EPS Dress Code Policy)</p> <p>No Uniform: Must follow "appropriate" dress guidelines according to the district guidelines. (JI-CA RA). Unallowable Example: Obscene language or symbols, or symbols of sex, drugs, violence, or alcohol on clothing are expressly prohibited.</p>		
James H. Rodriguez Elementary	<p style="text-align: center;">EPS STANDARD DRESS CODE (See EPS Dress Code Policy)</p> <p>JHR now has a casual dress policy. Students may wear any clothes that are modest (no shorts above fingertip length, no spaghetti straps) and school appropriate. Also, t-shirts should not reference drugs, alcohol or gang affiliation. If students fail to comply with this policy we will ask them to wear pants and shirts that we have in the office.</p>		

SCHOOL	SHIRTS/TOPS	PANTS/BOTTOMS	OTHER NOTES
Los Niños Kindergarten Center	<p>EPS STANDARD DRESS CODE (See EPS Dress Code Policy)</p> <p>LNKC now has a casual dress policy. Students may wear any clothes that are modest (no shorts above fingertip length, no spaghetti straps) and school appropriate. Also, t-shirts should not reference drugs, alcohol or gang affiliation.</p>		
San Juan Elementary	<p>EPS STANDARD DRESS CODE (See EPS Dress Code Policy)</p> <p>San Juan Elementary follows the standard code of dress (non uniform). If you have any questions please feel free to contact the school at 852-4225.</p> <p>Shoes—Most styles acceptable. (No Heeleys/skate shoes, no flip/flop sandals)</p> <p>Jackets—Any type of jacket is acceptable; however, they must fit the student properly. (No oversized sweat shirts, no gang affiliation)</p>		
Tony E. Quintana Elementary	<p>EPS STANDARD DRESS CODE (See EPS Dress Code Policy)</p> <p>TEQ Sombrillo Elementary is a casual dress school. No baggy or sagging pants will be allowed. No oversized sweatshirts or jackets will be allowed. No tight fitting jeans will be allowed. Shorts and skirts are allowed but must not be more than 2 inches above the knee. If you have any questions regarding our dress code policy please contact the school.</p>		
	<p>Shirts No mid-drift shirts or spaghetti straps No shirts with gang affiliation, alcohol, drugs, obscene gestures or words, explicit words, sexually suggestive pictures or words, logos, phrases, letters or words that are prejudicial, vulgar, profane, obscene or disruptive.</p>	<p>Pants No sagging or baggy pants No long belts Shorts and skirts must be no more than 2 inches above the knee. No tight fitting jeans</p>	<p>Shoes Most styles acceptable. (No Heeleys/skate shoes)</p> <p>Jackets Any type of jacket is acceptable; however, they must fit the student properly. (No oversized sweat shirts, no gang affiliation)</p>
Velarde Elementary	<p>EPS STANDARD DRESS CODE (See EPS Dress Code Policy)</p> <p>Once again we have adopted a casual dress code for all students this year. Please note that any deviation from what is considered appropriate attire by our staff will not be allowed. We are requesting your support in upholding our appropriate standards in dress. If you have any questions please feel free refer to EPS Standard Dress Policy, or contact the school administrator.</p>		



Inclement Weather and School Closure Procedures

The Española Public School District has an obligation to conduct education, business, and support activities on a regular basis despite occasional inconveniences caused by inclement weather or utility outages. At the same time, the District has a responsibility for the safety and well-being of its students, teachers and staff.

The District will not close during periods of inclement weather unless conditions are so severe as to endanger the school community. The Superintendent will determine if the District's Schools will close. The decisions will be made as early as possible, generally about 5:00 a.m. Media outlets will be notified no later than 5:30 a.m. The Superintendent or designee will notify and post notice to local radio, news stations and district website. Parents and families will also be notified via the school auto dialer not later than 6:30 a.m.

Delay Types and Start Times

Delayed Opening: If the Superintendent decides to delay the opening of school, proper notification procedures will be followed.

- Students will be on a 2 (two) hour delay schedule. Students will report as follows:

Elementary Schools (All)

Arrival: 9:50–10:20 a.m.

Classes Begin at 10:20 a.m.

Secondary Schools (CFVMS & EVHS)

Arrival 9:15–9:50 a.m.

First Bell–9:50 a.m. / Tardy Bell–9:55 a.m.

- School Administration, Teachers, School Staff, School Office Staff and Central Office Staff** will be on a 1 (one) hour delay schedule. Staff should report no later than 1 (one) hour after their regularly assigned start time. It is important that staff be available at each school site and Central Office to respond to parent inquiries and coordinate their maintenance and custodial services. Staff should take reasonable and safe measures in attempting to meet their employment obligations. Appropriate leave from your Supervisor may be requested by the employee to avoid hazardous conditions.
 - All School Based Staff shall assist in the supervision of students during arrival times to ensure student safety. School administration will coordinate and assign duty safety posts for all staff.
- All Custodial Staff will report no later than 7:00 a.m. or as assigned by Custodial/Maintenance Supervisor/Director. All custodial staff will assist in immediate snow removal. Critical walking areas should be cleared first to ensure staff and students have safe walking conditions upon arrival. Thereafter, custodians will be directed by the head custodian, maintenance supervisor and/or school administrator as to the ongoing snow removal and coordinated efforts necessary to maintain a safe school environment for staff and students. [Custodial Staff are pre-approved to work 2 additional extra duty hours on delay days with a 1 hour staggered lunch]
- School Closing:** If the Superintendent decides to close school, proper notification procedures will be followed. Based on the number of hours/days missed due to inclement weather or school closings, the Superintendent will announce at a later date the manner in which the instructional/contract time will be made up.
- School Administration, School Office Staff and Central Office Staff will be on a 1 hour delay. Staff should report no later than one (1) hour after their regularly assigned start time. It is important that staff be available at each school site to respond to parent inquiries and coordinate their maintenance and custodial services.
 - All Custodial Staff will report no later than 7:00 a.m., or as assigned by Custodial/Maintenance Supervisor/Director. All custodial staff will assist in immediate snow removal. Critical walking areas should be cleared first to ensure staff and students have safe walking conditions upon arrival. Thereafter, custodians will be directed by the head custodian, maintenance supervisor and/or school administrator as to the ongoing snow removal and coordinated efforts necessary to maintain a safe school environment for staff and students.
 - All Other Staff will NOT report and follow school CLOSURE guidelines. Staff will be required to make up instructional/contractual time at a later date, as determined by the Superintendent.
- Early Dismissal:** If the Superintendent decides to dismiss school early, the procedure shown below will be followed for early dismissal of students.
- Students will be released from school only after the principal has ascertained

that appropriate notice has been given to parents or guardians. Proper sign out and safety procedures for elementary students should be implemented to ensure students sent home on school buses are safely returned home during a non-scheduled early dismissal. Staff members should accompany students on the bus to ensure adult supervision is available and document safer release to an authorized adult. Elementary students should not be left unaccompanied and shall be returned to the school site to be picked up by an authorized adult.

- All School Site Staff may be released by the school Principal when they are no longer needed to supervise students.
 - The Principal and Office Support Staff will remain at the school until all students have departed and all school buses have cleared their routes.
- All Central Office Staff may be released by the Superintendent when they are no longer needed to maintain daily operations and respond to school and public needs.

Local Media Resources

District Website: www.k12espanola.org

KDCE Radio: 100.7 FM or 950 AM

KOB 4: www.kob.com/closings/index.shtml

KOAT 7: www.koat.com/weather/closings

KRQE 13: www.krqe.com/



Accredited by North Central Association of
Universities, Colleges and Secondary Schools
AN EQUAL OPPORTUNITY EMPLOYER



Emergency Response Parent & Family Procedures

Dear Parents:

Should an emergency or disaster situation ever arise in our area while school is in session, we want you to be aware that the schools have made preparations to respond effectively to such situations. In fact, public schools in New Mexico are built to meet stringent construction standards and may be safer than your own home in the event of a disaster.

Should we have a major disaster during school hours, your child/children will be cared for at their school. Our School District has a detailed emergency crisis plan, which has been formulated to respond to a major catastrophe. Your cooperation is necessary in any emergency.

1. Do not telephone the school. Telephone lines may be needed for emergency communication. Instead please tune in to local radio, television, the District website, or District office. Do the following:

Go to:

Local Radio **KDCE: 950 AM or 100.7 FM**
Local television stations: **KASA – 2, KOB – 4, KOAT – 7, and KRQE 13**
District Website: **www.k12espanola.org**
District central office **(505) 367-3300**

2. In the event of a serious emergency, students will be kept at their schools until they are picked up by a responsible adult, who has been identified as such on a School District Emergency form, which is required to be filled out by parents at the beginning of every school year. Please be sure to consider the following criteria when you authorize another person to pick up your child at school.

- He/she is 18 years of age or older.
- He/she has a valid picture ID.
- He/she is usually home during the day.
- He/she could walk to school, if necessary.
- He/she is known to your child.
- He/she is both aware of and able to assume this responsibility.

3. Impress upon your children the need for them to follow the directions of any school personnel in times of an emergency.

Students will be released only to parents and persons identified on the School District Emergency form. During an extreme emergency, students will be released at designated reunion gates located on school campuses. Please instruct your child/children to remain at school until you or a designee arrives.

The decision to keep students at school will be based upon whether or not streets in the area are open. If this occurs, radio stations will be notified. In the event that a natural disaster takes place during the time that students are being transported, students will be kept on the bus and the driver will ask for assistance through radio contact with the school and district personnel. Any child who is home waiting

for the bus will not be picked up (if roads are impassable) and remains the responsibility of the parent or guardian. In the event that a natural disaster occurs in the afternoon, the driver will make every attempt to continue delivering the students to their homes. Should road conditions prevent the driver from delivering students to their homes or to school in the morning, the students will be delivered to the nearest school site, and that school will communicate with the home school to inform them of the students' whereabouts.

In case of a hazardous release event (chemical spill) near the school area, Shelter-in-Place procedures will be implemented to provide in-place protection. All students and staff will clear the fields, report to their rooms, and all efforts will be made to prevent outside air from entering classrooms during the emergency. "Shelter-in-Place" signs will be placed in classroom windows or hung outside classroom doors during a drill or emergency. Students arriving at school during a Shelter-in-Place drill or event should report to the school office or to a previously designated area at the school because classrooms will be inaccessible. When the dangerous incident has subsided, an all-clear signal will be given.

Please discuss these matters with your immediate family. Planning ahead will help alleviate concern during emergencies.

Sincerely,

Bobbie J. Gutierrez, *Superintendent*
Don Lopez, *Director Safety & Security*



Special District Programs

Programs, Partnerships
& Initiatives

AdvancED–North Central Accreditation:

Española Valley High School is accredited by AdvancED –North Central Accreditation. AdvancED is the largest community of education professionals in the world. They are a non-profit, non-partisan organization that conducts rigorous, on-site external reviews of PreK–12 schools and school systems to ensure that all learners realize their full potential.

Bilingual and Multicultural Education Program (BMEP)

EPS offers a comprehensive Bilingual and Multicultural Education program, supporting students English Language Development, Heritage home language and Enrichment languages in Spanish and Tewa. The EPS Bilingual Multicultural Education programs strives to ensure children have access to effective bilingual multicultural education programs providing culturally and linguistically responsive, rigorous instructional programming that supports all students—including immigrant and/or English learners (ELs)—to become bilingual and biliterate, meet and exceed all content area standards, demonstrate academic excellence, and experience school success, such that students are prepared beyond the classroom to lead productive, purposeful lives in service to the larger community.

21st Century Community Learning Centers

This program supports the creation of community learning centers that provide academic enrichment opportunities during non-school hours for children, particularly students who attend high-poverty and low-performing schools. The program helps students meet state and local student standards in core academic subjects, such as reading and math; offers students a broad array of enrichment activities that can complement their regular academic programs; and offers literacy and other educational services to the families of participating children.

Española recently learned that our very own 21st Century Program serves as the state model for 21st Century Programs.

Cooking with Kids

Cooking with Kids educates and empowers children and families to make healthy food choices through hands-on nutrition education with fresh, affordable foods.

In Our School Classrooms

We provide fun and positive experiences with healthy foods and give kids confidence in the kitchen. Started in 1995, Cooking with Kids serves over 5,000 children in Northern New Mexico every year.

In Our School Cafeterias

We help school cafeterias use local food, cook from scratch, and successfully introduce new foods into the lunchroom. Local chefs and farmers share their expertise to create cafeteria-culinary connections.

In Our Communities

We build classroom-to-kitchen bridges that support healthy eating efforts at home. Cooking classes provide a non-intimidating environment where family volunteers feel they can contribute with their knowledge of food, cooking, and a desire to help their child.

EPS offers Cooking with Kids at San Juan Elementary School, Abiquiu Elementary School, Dixon Elementary School and Velarde Elementary School, as well as Carlos F. Vigil Middle School and Hernandez Elementary School with 21st Century programming.

Advancement Via Individual Determination (AVID)

AVID, an acronym for Advancement Via Individual Determination, is an “untracking” program designed to help underachieving students with high academic potential prepare for entrance to colleges and universities. The AVID approach to untracking places previously underachieving students



(who are primarily from low income and ethnic or linguistic minority backgrounds) in the same college preparation academic program as high-achieving students (who are primarily from middle or upper-middle income and “majority” backgrounds). AVID features a rigorous academic elective course with a sequential curriculum for grades 7 through 12 that focuses on writing, inquiry, and collaboration as methodologies to accelerate student progress.

AVID Elementary

By teaching and reinforcing academic behaviors and higher-level thinking at a young age, AVID Elementary teachers create a ripple effect in later grades. Elementary students develop the academic habits they will need to be successful in middle school, high school, and college, in an age-appropriate and challenging way. Children learn about organization, study skills, communication, and self-advocacy. AVID Elementary students take structured notes and answer and ask high-level questions that go beyond routine answers.

The strong college-going culture on an AVID Elementary campus encourages students to think about their college and career plans. Schools cover their walls with college pennants and banners, and educators speak about their college

experiences. College and careers are no longer foreign concepts, and teachers provide the academic foundation students need to be on a path for college and career success. AVID Elementary closes the opportunity gap before it begins.

Schools may begin AVID Elementary by training teachers across a certain grade level(s) or the entire campus. The training can start with a group as small as four participating in three days of AVID professional learning.

AVID Secondary

Our nation’s schools are full of students who possess a desire to go to college and the willingness to work hard, but many of them do not truly have the opportunity to be college-ready. These are often the students who will be the first in their families to attend college and are from groups traditionally underrepresented in higher education. AVID Secondary equips teachers and schools with what they need to help these students succeed on a path to college and career success.

To address this need, AVID has developed the AVID Elective course. For one period a day, students receive the additional academic, social, and emotional support that will help them succeed in their school’s most rigorous courses. Districts have the flexibility to decide how many AVID Elective classes to start and which

grade levels will implement AVID first. Additionally, in middle school, the language and literacy needs of long-term English language learners can be addressed through the AVID Excel elective class.

The power of AVID Secondary is the ability to impact students in the AVID Elective class *and* all students throughout the campus. AVID Secondary can have an effect on the entire school by providing classroom activities, teaching practices, and academic behaviors that can be incorporated into any classroom to improve engagement and success for all students. Teachers can take what they've learned at AVID training back to any classroom to help all students, not just those in AVID, to become more college- and career-ready.

City of Española– Teen Court Partnership:

EPS partners with the City of Española to support community needs. The Teen Court Partnership offers an alternative court where first-time offenders are defended, prosecuted, judged and sentenced by their peers. Teens are referred with misdemeanors if they are willing to take responsibility for their actions and plead guilty. Teen Court is a way of keeping the juveniles' record clean. The charge is taken off their record once the teen successfully completes his or her sentence only on the first offense. Services offered are community service, service on jury panel treatment programs, mediation, GED completion, educational classes, and counseling.

Common Core State Standards (CCSS):

Today's students are preparing to enter a world in which colleges and businesses are demanding more than ever before. To ensure all students are ready for success after high school, the Common Core State Standards establish clear, consistent guidelines for what every student should know and be able to do

in math and English language arts from kindergarten through 12th grade. The new standards also provide a way for teachers to measure student progress throughout the school year and ensure that students are on the pathway to success in their academic careers. EPS has provided extensive training for staff and administrators to implement and shift to CCSS. Curriculum and testing are aligned with CCSS.

Dual Credit

EPS partners with Northern New Mexico College and the College of Santa Fe to provide Dual Credit opportunities and programs for EVHS students. Dual Credit is a statewide program allowing high school students to earn college credit *tuition free*. Dual Credit provides an opportunity for significant tuition savings. It gives students an opportunity to work towards a degree while in high school, and fulfills the requirement that all high school students must take one of the following courses to be eligible to graduate: *honors, advanced placement, dual credit, or distance learning*. You may take as many courses as you wish including summer classes, provided they do not interfere with your high school work. Remedial, developmental and fitness classes may not be taken for dual credit. Dual credit students are not eligible for scholarships or financial aid. In order to take a dual credit course, high school students must take either the ACT, SAT, or COMPASS placement exam. Scores help college advisors place students in courses that align with their career plans and academic preparation. Courses are offered at the high school with an instructor who has been certified to offer the course, through online distance learning with other high school and dual credit students, and at a college campus with college and dual credit students.

Federal Programs

The Mission of the EPS Title I/Federal Programs Department is to improve student literacy and math achievement, by providing customer service to all stakeholders through quality process and effective communication. The Elementary and Secondary Education Act (ESEA) provides financial assistance to local

educational agencies (LEAs) and schools with high numbers or high percentages of children from low-income families to help ensure that all children meet challenging state academic standards. Title I, Part A of ESEA was originally undertaken by President Lyndon B. Johnson as a part of his "war on poverty". It was then and is now the largest compensatory education program in America. The intent of Title I is to narrow the education gap that exists between middle and low income children by providing extra resources to help improve instruction in high-poverty schools. EPS provides school-wide Title I services to all K–8 students and targeted assistance to students in grades 9–12. Title I programs support Tier II interventions for students at risk through school wide during, afterschool, and summer school services.



Fine Arts Education Act Funding

EPS elementary schools participate in NM PED sponsored fine arts programs. The Fine Arts Education Act (FAEA) was enacted to provide funding to encourage school districts to offer opportunities for elementary school students to participate in arts education programs, including visual arts, music,



theatre, and dance. Arts programs encourage cognitive and affective development by: focusing on a variety of learning styles and engaging students through success; training students in complex thinking and learning; helping students to devise creative solutions for problems; providing students with new challenges; and teaching students to work cooperatively with others and to understand and value diverse cultures. EPS offers music instruction, dance and theatre instruction thru a partnership with the National Dance Institute, and a wide range of art opportunities through visiting artists contracted services and field trips.

Gifted and Talented Education (GATE)

In New Mexico, students who are determined to be gifted are considered “exceptional.” They are served through applicable state rules for special education (Tier 3). EPS provides a comprehensive GATE program for qualifying students.

Northern New Mexico Inquiry Science Education Consortia (ISEC)

Española Public Schools is a member ISEC. Our kindergarten–grade 6 students participate in inquiry based, hands-on science, through teacher facilitated guidance in activities found in science

kits. The lessons and activities are aligned with the recently released Next Generation Science Standards.

Upward Bound

Upward Bound provides fundamental support to participants in their preparation for college entrance. The program provides opportunities for participants to succeed in their precollege performance and ultimately in their higher education pursuits. Upward Bound serves: high school students from low-income families; and high school students from families in which neither parent holds a bachelor’s degree. The goal of Upward Bound is to increase the rate at which participants complete secondary education and enroll in and graduate from institutions of postsecondary education. Northern New Mexico College partners with Española Valley High School to deliver this program to students at EVHS.

Teacher Residency Program

Northern New Mexico College will receive \$191,101 to support the development of a residency model program that creates a strong university-district-agency partnership between the College of Education at Northern New Mexico College, Española Public Schools and the Jicarilla Apache Department of Education. The residency program will address the need to recruit, train and retain quality teachers and teacher candidates in Northern New Mexico communities that serve large numbers of Native American and English-language-

learner students. Through the creation and implementation of a model lab school, Northern New Mexico will use the funds to train teacher candidates in high-quality pedagogical knowledge and community-based sensitivity awareness, and develop a pipeline of teacher candidates in Northern New Mexico.

RAMS, formerly Results Driven Accountability

New Mexico’s Results Driven Accountability Project (RDA), now RAMS, meets the requirements of IDEA B Indicator 17, the State Systemic Improvement Plan. RDA is focused on early elementary reading achievement in a subset of public elementary schools. The project’s goals include increasing reading achievement for all students in Kindergarten through grade three, with a specific emphasis on students scoring in the lowest quartile. The project is a collaborative effort among the Title I Bureau, the Special Education Bureau, the Literacy Bureau, the Priority Schools Bureau, Parents Reaching Out (PRO), Education for Parents of Indian Children with Special Needs (EPICS), Eastern New Mexico University, REC #6, REC #7, and REC #8.

RDA schools are provided professional development, coaching, technical assistance, and additional funds to support school improvement targeted to early elementary reading achievement. San Juan and Alcalde elementary schools participate in RAMS.

Twelve Things Parents and Families Should Know and Expect From EPS Schools

It is important for parents to become strong advocates for their children and equal partners in the decision-making processes for their children.



According to KSA-Plus Communications in a report released a few years ago, there are twelve things parents should know about and expect from their schools. These were originally released in the *Working Together Toolkit*, developed by NMPED in 2006. These serve as a guide for increasing parent and community involvement in our public schools.

1. Your involvement matters a lot.

- ✓ Your child is more likely to earn higher grades and test scores, enroll in higher level programs, be promoted and earn credits, attend

school regularly, have better social skills and go to college if you have participated in school functions and activities with your child.

2. You can be involved in many ways.

- ✓ Establishing a learning environment at home for the whole family.
- ✓ Volunteering at school and taking part in school activities that promote education.
- ✓ Being an advocate for your child and others by urging state and local leaders to establish stronger programs and higher achievement standards.
- ✓ By being a decision-maker through taking part in decisions about programs, staffing and policies.

3. The children need you.

- ✓ The National Assessment of Education Progress (NAEP) shows that American students are not doing as well as they should.
- ✓ Less than one-third are doing well in reading, writing, math, science and other critical subjects.
- ✓ Skills needed for success in this century demand that we hold higher expectations for our students.

4. The school needs you.

- ✓ One of the major challenges facing schools today is lack of parent involvement.
- ✓ Parent involvement is needed in a variety of areas.

5. You should be told clearly what the learning standards are in each grade.

- ✓ Parents and students need to know at the beginning of the school year, what is being taught in all subjects.

- ✓ Parents need to know how learning will be assessed so they can understand how to help their children.

- ✓ Parents should have access to Common Core Standards and information about PARCC testing just as teachers and administrators do.

6. You should be told about the school's safety standards and discipline.

- ✓ Students need to feel safe in order to learn.

- ✓ Parents should know what the schools safety and discipline standards are, how problems are handled, and what the school is doing to be sure standards are upheld.

7. You should be informed on a regular basis how your child and your child's school are doing.

- ✓ School districts are required to publish parent-friendly report cards every year that show both how students are performing, as well as how the school is performing as a whole.

8. Middle and high school parents should be told of what steps should be taken for your child to apply for college.

- ✓ Middle and high school is not too early to begin thinking about what kind of courses your child should be taking if he or she wants to go to college.

9. You should know your options.

- ✓ The Every Student Succeeds Act (ESSA) has many requirements that schools must meet in order to be in compliance. Ask for this information and ask questions about anything you do not understand.

10. You should be able to get answers to your important questions.

- ✓ How do I know my child is safe?
- ✓ What is my child expected to know and be able to do in reading, writing, math and other subjects?
- ✓ How is learning measured?
- ✓ What will the school do to help my child if he or she is behind?
- ✓ What can I do to help?

11. You should be treated with respect.

- ✓ Educators are hired to work with your children.
- ✓ You have the right to be treated as an equal partner in your child's education.

12. You are more likely to get what you want for your child if you work with other parents.

- ✓ Approach problem-solving in a collaborative way involving other parents.
- ✓ If five parents approach the teachers or administration with a concern, the response is likely to be, "Let's have a meeting."
- ✓ If 10 parents approach the teachers or administration with a concern, the response is likely to be, "Let's discuss this fully and listen carefully."
- ✓ If 25 parents approach the teachers or administration with a concern, the response is likely to be, "Our dear friends, let's work together to..."
- ✓ If 50 parents approach the teachers or administration with a concern, the response is likely to be, "This is a powerful organization."

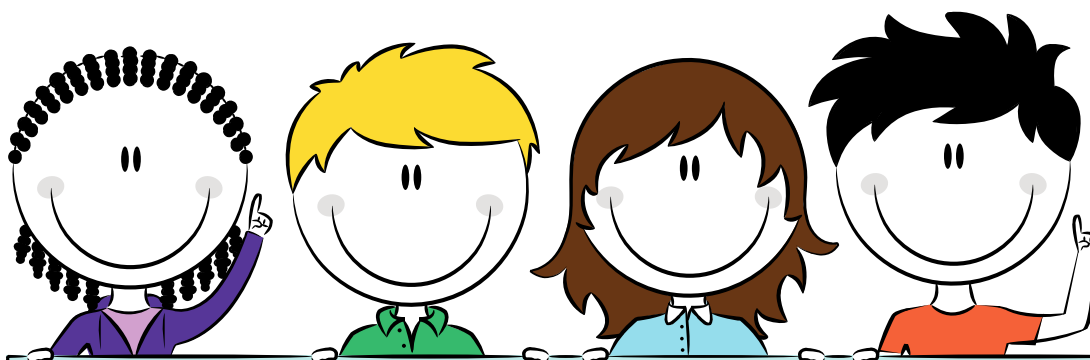


Cafeteria Program

All Española Public Schools Pre-K, Elementary, Middle, and High Schools have Community Eligibility Provision (CEP) status, meaning all students receive universal free breakfast and lunch. Española Public Schools also provides dinners to our students who participate in the 21st Century Program.



No Shots? No Records? No School.



**Children will not be enrolled
unless an immunization record
is presented and
immunizations are up-to-date***

**Unless your child has a valid exemption or is experiencing homelessness*



Go to <https://nmhealth.org/about/phd/idb/imp/sreq/> to access
information about immunization requirements

Adapted with appreciation from California Department of Public Health



Wellness Staff

Nurses

****Vacancy at San Juan Elementary**
Maria Cata – Dixon, Velarde, Alcalde
Frances Madrid – ETS /Fairview
Paula LeDoux – TEQ and Chimayo
Marisa Anaya – JHR and as needed for LNK
Clarissa (Nadine) Mondragon – LNK, Hernandez, Abiquiu
Victoria Baros – CVMS
Reina Vigil Sanchez – EVHS

Counselors

Theresa Bustos – LNK, Hernandez, Abiquiu

Monique Rivera – ETS /Fairview
Leonard Quintana – Dixon, Velarde, Alcalde
Leona Talachy – San Juan
LaDonna Phillips – TEQ and Chimayo
Denise Lopez – CVMS 8th
Jocelyn Herzog – CVMS 7th
Stephanie Garduño – 9th
Marcella Maestas – 10th
Landen Elliot-Knaggs – 11th
Evelyn Martinez – 12th

Social Workers

Teresa Chavez – Alcalde, Dixon, Velarde
Amanda Gurule – San Juan, Hernandez

Beverly Marquez – ETS, TEQ
Rick Vigil – EVHS
Bernadine Baca – EVHS
Tina Talachy – CVMS
Olivia Treasure – EVHS
Marie Leyba – CVMS

Psychologists

Dr. Lloyd Vigil
Vacancy
Dr. Alice Meador
Patricia Rodriguez

August 2019

Dear Parents,

Due to the recent outbreaks of measles in the United States, we are writing you to make you aware of some important details. If there is a measles case in your child's school, your child may not be able to attend school until the outbreak ends, if they have not been immunized against the disease.

Measles is one of the most contagious of all infectious diseases; up to 9 out of 10 susceptible persons exposed will develop measles. A single case of the measles can quickly spiral into an outbreak, because people may not know they have the illness (and are spreading it) for several days before they begin to show rash symptoms.

The measles virus is spread by direct contact with infectious respiratory droplets when the infected person coughs, breathes, or sneezes. The measles virus can remain infectious in the environment for up to 2 hours after an infected person leaves the area. The length of incubation from exposure to measles virus to symptom development is 7 to 21 days. The telltale rash occurs on average 14 days after exposure, and 4 days after symptoms first appear.

If there is an outbreak of measles in New Mexico and your child is not immunized against the disease, all schools will be encouraged to follow the protocol recommended by the New Mexico Department of Health and the CDC, which states your child will not be allowed to attend classes for at least 42 days (the length of two incubation periods) following the last known case. Additionally, your school will likely not permit unimmunized students to travel on any school-sponsored activity to other states, countries, or areas in New Mexico that have had outbreaks of measles.

In order to ensure that your child will be able to attend school or travel on school-sponsored trips in the event of an outbreak of measles in NM, or other areas, your child must have received two doses of the measles, mumps, and rubella vaccine (MMR). After receiving the first dose, there is a minimum 28 day waiting period until a second dose can be administered. Documentation that those immunizations were given must be provided to your school nurse or administrator.

If you need information about where this vaccine can be obtained at no cost to you, please contact your child's primary care physician, your local Public Health Office or the Immunization Program at 505-827-2356 or toll free 1-833-882-6454, and we will be happy to provide this information to you.

Sincerely,

The Immunization Program

PUBLIC HEALTH DIVISION

1190 St. Francis Dr., Suite 1050 • P.O. Box 26110 • Santa Fe, New Mexico • 87502
(505) 827-2389 • FAX: (505) 827-2329 • www.nmhealth.org



HEALTH

Vaccine		Minimum # of vaccine doses by childcare and pre-school age levels						Vaccine doses by school grade level												Notes			
		By 4 Mo.	By 6 Mo.	By 12 Mo.	By 15 Mo.	16-47 Mo.	48-59 Mo.	≥ 60 Mo.	K	1 st	2 nd	3 rd	4 th	5 th	6 th	7 th	8 th	9 th	10 th		11 th	12 th	
Diphtheria/Tetanus/ Pertussis (DTaP/DT/Td)*		1	2	3	3	3	4	5	5	5	5	5	5	5	5	5	5	5	5	5	5	One dose required on/after 4 th birthday. Four doses are sufficient if last dose given on/after 4 th birthday, but five doses are preferred for optimal protection.	
Tetanus/Diphtheria/ Pertussis (Tdap)		One dose Tdap required for entry into 7 th grade. HPV vaccination is also strongly recommended for the prevention of cancer.																					
Polio (IPV)* (OPV [†])		1	2	2	2	3	4	4	4	4	4	4	4	4	4	4	4	4	4	4	4	Students in K-9 th grades final dose required on or after 4 th birthday. Three doses sufficient if CDC's catch-up schedule used AND last dose was given on/after 4 th birthday with at least 6 months between the last two doses.	
Measles/Mumps/ Rubella (MMR)				1		1	2	2	2	2	2	2	2	2	2	2	2	2	2	2	2	Minimum age for valid 1st dose is 12 mos. Live vaccines (MMR, Varicella) must be given on the same day; if not, they must be administered a min. of 28 days apart.	
Haemophilus Influenzae type B (Hib)*		1	2	2	2	3/2/1	3/2/1	3/2/1															
Hepatitis B (HepB)		1	2	3	3	3	3	3	3	3	3	3	3	3	3	3	3	3	3	3	3	Two doses adult Recombivax HB is also valid if administered at ages 11-15 and if dose 2 received no sooner than 16 weeks after dose 1.	
Pneumococcal (PCV)*		2	3	3	4/3/2/1	4/3/2/1	4/3/2/1	4/3/2/1															
Varicella (VAR)				1		1	2	2	2	2	2	2	2	2	2	2	2	2	2	2	2	Min. age for 1st dose is 12 mos. Dose 2 should ideally be given at age ≥4, see note below. Live vaccines (MMR, Varicella) must be given on same day; if not, they must be administered a min. of 28 days apart. For K-4 th graders, receipt of vaccine, titer or laboratory-confirmed diagnosis is required as proof of prior disease.	
Hepatitis A (HepA)				1		1	2	2	Please be aware that 2 doses will be required for Kindergarten entry in 2020-21.														
Meningococcal Men (ACWY)														1								1 dose required at age 11-12 for 7 th grade entry; booster dose recommended at age 16-18. Men ACWY strongly recommended for ages 13-18.	

Hep B: Dose 2 a minimum of 4 weeks after dose 1; dose 3 at least 16 weeks after dose 1 and at least 8 weeks after dose 2. Infants currently receiving primary series, final dose should be administered no earlier than age 24 weeks.

PCV: Administer a series of PCV13 vaccine at ages 2, 4, 6 months with a booster at age 12-15 months. **Catch-up:** Administer 1 dose of PCV13 to all healthy children 12-59 months who are not completely vaccinated for their age; children >60 months, no doses required.

Varicella: For children 12 months-12 years, the minimum interval between the two doses is 3 months. However, if dose 2 was administered ≥28 days after dose 1, dose 2 is considered valid and need not be repeated. For children ≥13 years, the recommended minimum interval is 4 wks.

Required for proof of varicella immunity:

- For K-4th graders: Receipt of vaccine; titer or laboratory confirmed diagnosis is required as proof of prior disease.
- For 5th-12th graders: Receipt of vaccine, written proof of immunity by a physician/health care provider or laboratory titer is required.
- All newly diagnosed varicella cases require laboratory confirmation of disease.

Hep A: One dose required by 15 months; 2 doses required at 48 months with at least 6 months between doses. Hep A vaccine is only required for childcare and pre-school age children; however in 2020-21, 2 doses will be required for Kindergarten.

Notes: Any vaccine administered ≤4 days prior to minimum interval or age is valid. All students enrolled in designated grades are expected to meet requirements. Updated March, 2019

***Minimum age 6 weeks. Flu vaccine** is recommended for everyone 6 months and older.

Flu vaccine is recommended for everyone 6 months and older.

Flu vaccine is recommended for everyone 6 months and older.

Flu vaccine is recommended for everyone 6 months and older.

Flu vaccine is recommended for everyone 6 months and older.

Flu vaccine is recommended for everyone 6 months and older.

Flu vaccine is recommended for everyone 6 months and older.

Flu vaccine is recommended for everyone 6 months and older.

Flu vaccine is recommended for everyone 6 months and older.

Flu vaccine is recommended for everyone 6 months and older.

Flu vaccine is recommended for everyone 6 months and older.

Flu vaccine is recommended for everyone 6 months and older.

Flu vaccine is recommended for everyone 6 months and older.

Flu vaccine is recommended for everyone 6 months and older.

Flu vaccine is recommended for everyone 6 months and older.

Flu vaccine is recommended for everyone 6 months and older.

Flu vaccine is recommended for everyone 6 months and older.

Flu vaccine is recommended for everyone 6 months and older.

Flu vaccine is recommended for everyone 6 months and older.

Flu vaccine is recommended for everyone 6 months and older.

Flu vaccine is recommended for everyone 6 months and older.

Recommended schedule for adult students age 19+ in secondary school	
Vaccine	Recommended doses
Tetanus/Diphtheria/Pertussis (Tdap)	1
Measles/Mumps/Rubella (MMR)	2
Varicella (VAR)	2

Resources

NM Immunization Protocol
<https://nmhealth.org/publication/view/regulation/531/>

NMSIS
<https://nmsis.health.state.nm.us>

NM School Health Manual
<http://www.nmschoolhealthmanual.org>

For more information call your Regional DOH Immunization contact

Requisitos de Inmunización en Nuevo México para Guardería/Preescolar/Escuela: Año Escolar 2019-20

El personal de enfermería de las escuelas de Nuevo México ha recibido autorización de la Secretaría del Departamento de Salud de NM para poder obtener y someter información sobre inmunizaciones

Vacuna	Mínimo # de dosis de vacunas para guardería y niños en edad preescolar							Dosis de vacuna según el grado escolar												Notas
	4 Mes	6 Mes	12 Mes	15 Mes	16-47 Mes	48-59 Mes	≥ 60 Mes	K	1	2	3	4	5	6	7	8	9	10	11	
Difteria/Tétanos/ Pertusis (DTaP/DT/Td)*	1	2	3	3	3	4	5	5 (4)	5 (4)	5 (4)	5 (4)	5 (4)	5 (4)	5 (4)	5 (4)	5 (4)	5 (4)	5 (4)	5 (4)	5 (4)
Tétanos/Difteria/ Pertusis (Tdap)															1	1	1	1	1	1
Polio (IPV)* (OPV ⁴)	1	2	2	2	3	4 (3)	4 (3)	4 (3)	4 (3)	4 (3)	4 (3)	4 (3)	4 (3)	4 (3)	4 (3)	4 (3)	4 (3)	4 (3)	4 (3)	4 (3)
Sarampión/ Paperas/ Rubéola (MMR)																				
Influenzae tipo B (Hib)*	1	2	2	2	3/2/1	3/2/1	3/2/1													
Hepatitis B (HepB)	1	2	3	3	3	3	3	3	3	3	3	3	3	3 (2)	3 (2)	3 (2)	3 (2)	3 (2)	3 (2)	3 (2)
Neumococo (PCV)*	2	3	3	4/3/2/1	4/3/2/1	4/3/2/1	4/3/2/1													
Varicela (VAR)																				
Hepatitis A (HepA)																				
Meningococo Men(ACWY)																				

Difteria/Tétanos/Pertusis: Si el niño (4 meses-6 años) está retrasado, siga el programa de recuperación de CDC.

Tétanos/Difteria/Pertusis: Los alumnos de 7-12 grado se les requiere prueba de 1 dosis de Tdap recibida, independientemente de cuándo se administró la última vacuna que contenía Td.

Para ponerse al día: Niños de 7-18 años que no están completamente vacunados con la serie DTap deben ser vacunados de acuerdo con el calendario de recuperación CDC, con Tdap como la primera dosis seguida por Td si es necesario. Una serie de 3 dosis es suficiente si se inicia después de los 7 años de edad en la que la 1ª dosis debe ser Tdap, seguida de dos dosis de Td. Niños de 7-10 años que reciben 1 dosis de Tdap como parte del programa de recuperación de CDC requieren 1 dosis adicional a los 11-12 años para la entrada al 7º grado.

Polio: Un mínimo de 4 semanas entre las dosis requeridas con 6 meses entre las 2 últimas. *OPV (polio oral) dado después del 1 de abril de 2016 no es válido.

MMR: La 2ª dosis requerida debe darse en / después del 4º cumpleaños. Sin embargo, la 2ª dosis puede administrarse antes, con al menos 4 semanas entre la 1ª y 2ª dosis.

Hib: Si la serie comenzó <12 meses de edad, se requieren 3 dosis con al menos 1 en / después del primer cumpleaños. Se requieren 2 dosis si la primera dosis se recibe a los 12-14 meses. Una dosis de vacuna Hib administrada entre los 16 - 59 meses de edad es suficiente. No se recomienda ≥60 meses de edad.

***Edad mínima 6 semanas.** **Notas:** Cualquier vacuna administrada ≤4 días antes de la gripe es recomendada para todas las edades de 6 meses y mayor. La vacuna contra la gripe es recomendada para todos los alumnos matriculados en los grados designados cumplan los requisitos. Modificado marzo de 2019

Hep B: 2ª dosis al menos 4 semanas después de la 1ª dosis; 3ª dosis al menos 16 semanas después de la 1ª dosis y al menos 8 semanas después de la 2ª dosis. Los niños que actualmente reciben la serie primaria, la dosis final no debe administrarse antes de las 24 semanas de edad.

PCV: Administre una serie de vacunas PCV13 a las edades de 2, 4, 6 meses con un refuerzo a los 12-15 meses de edad. **Para ponerse al día:** Administre 1 dosis de PCV13 a todo niño sano de 12-59 meses que no esté completamente vacunado para su edad; para niños >60 meses, no se requieren dosis.

Varicela: Para niños de 12 meses a 12 años, el intervalo mínimo entre las dos dosis es de 3 meses. Sin embargo, si la 2ª dosis fue administrada ≥28 días después de la 1ª dosis, la 2ª dosis se considera válida y no es necesario repetirla. Para niños ≥ 13 años, el intervalo mínimo recomendado es de 4 semanas.

Requerido como prueba de inmunidad contra Varicela:

- **Para estudiantes de K a 4º grado:** Comprobante de vacuna; título o diagnóstico confirmado en laboratorio como prueba de enfermedad previa.
- Para estudiantes de 5º a 12º grado: Es necesario comprobante de vacuna, prueba escrita de inmunidad por un doctor/proveedor del cuidado de la salud o título por laboratorio.
- **Todos los casos nuevos de Varicela requieren confirmación de la enfermedad por laboratorio.**

Hep A: Se requiere 1 dosis a los 15 meses; 2 dosis requeridas a 48 meses con al menos 6 meses entre las dosis. La vacuna contra la hepatitis A se requiere solamente para niños en guarderías y en edad preescolar, pero en 2020-21, 2 dosis van a ser requeridas para la entrada al Kindergarten.

Programa recomendado para alumnos adultos de 19+ años en escuela secundaria	
Vacuna	Dosis recomendada
Tétanos/Difteria/Pertusis (Tdap)	1
Paperas/Sarampión/Rubéola (MMR)	2
Varicela (VAR)	2

Recursos

Protocolo de inmunización NM:
<https://nmhealth.org/publication/view/regulation/531/>

NMSIS:

<https://nmsis.health.state.nm.us>

Manual de Salud Escolar NM:

<http://www.nmschoolhealthmanual.org>

Para más información llame a su contacto regional de inmunización NMDOH

Fall 2019

Assessment	Grades	Fall 2019
Istation Indicators of Student Progress (ISIP)	K-2 ¹	August or September ¹
Math, ELA, and Science Senior Retests ²	12	District scheduled
New Mexico Alternate Performance Assessment (NMAPA) Senior Retests Only	Senior Retest	Oct. 14 – Nov. 1
Kindergarten Observation Tool	Kindergarten	First 30 days of instructional year
End of Course Exams	TBD	TBD
National Assessment of Educational Progress (NAEP) ³	Selected students	Oct. 14 – Dec. 20

Winter & Spring 2020

Assessment	Grades	Winter 2020	Spring 2020
(New) Math and ELA Assessment	3-8		April 6 – May 8 (estimated)
(New) College Entrance Exam (Math and ELA)	11	TBD	TBD
SBA Spanish Reading ⁴	3-8, 11, 12, 12+		April 6 – May 8
New Mexico Assessment of Science Readiness (NMASR)	5, 8, 11		March 2 – 27
Istation Indicators of Student Progress (ISIP)	K-2 ¹	January 1 – 31	May 1 – 31
(New) Dynamic Learning Maps (DLM)	3-8, 11		March 9 – April 10
ACCESS for ELLS Alt-ACCESS	ACCESS: K-12 Alt-ACCESS: 1-12	Jan. 13 – Mar. 6	
End of Course Exams	TBD	TBD	TBD
National Assessment of Educational Progress (NAEP) ³	Selected students	Jan. 6 – Mar. 13	Mar. 16 – May 22

Please note that PED is currently in procurement process for those assessments identified as new.

¹ Grades K-2 in all schools statewide; K-3 in RAMS (formerly RDA) schools; grades K-5 in K-5 Plus schools. The **first** administration of Istation is recorded in the BOY, MOY, and EOY administration months. The BOY administration is in August or September. Each district should choose **one** calendar month for BOY administration.

² End of Course Exams will be used in lieu of Transition Assessment, SBA Science, SBA Spanish for senior retests.

³ A small number of students in selected districts. Participating districts and schools have already been notified.

⁴ A Spanish Language Arts proficiency assessment may be available in place of the SBA Spanish Reading for some grades. More information will be forthcoming.



2019-2020 SCHOOL CALENDAR

(Kinder - 12 Grade)

Board Approved: March 28, 2018/Revised Approval May 2, 2018

JULY 2019						
S	M	T	W	T	F	S
	1	2	3	4	5	6
	7	8	9	10	11	12
	13	14	15	16	17	18
	19	20	21	22	23	24
	25	26	27	28	29	30
	31					
AUGUST 2019						
S	M	T	W	T	F	S
				1	2	3
	4	5	6	7	8	9
	10	11	12	13	14	15
	16	17	18	19	20	21
	22	23	24	25	26	27
	28	29	30	31		
SEPTEMBER 2019						
S	M	T	W	T	F	S
	1	2	3	4	5	6
	7	8	9	10	11	12
	13	14	15	16	17	18
	19	20	21	22	23	24
	25	26	27	28	29	30
	31					
OCTOBER 2019						
S	M	T	W	T	F	S
			1	2	3	4
	5	6	7	8	9	10
	11	12	13	14	15	16
	17	18	19	20	21	22
	23	24	25	26	27	28
	29	30	31			
NOVEMBER 2019						
S	M	T	W	T	F	S
					1	2
	3	4	5	6	7	8
	9	10	11	12	13	14
	15	16	17	18	19	20
	21	22	23	24	25	26
	27	28	29	30	31	
DECEMBER 2019						
S	M	T	W	T	F	S
	1	2	3	4	5	6
	7	8	9	10	11	12
	13	14	15	16	17	18
	19	20	21	22	23	24
	25	26	27	28	29	30
	31					

PED Reporting Days	
Summer	Sept 3 (K3+)
40th Day	2nd Wed Oct (10/9)
80th Day	Dec 2
120th day	2nd Wed Feb (2/12)
EOY	after last day (5/22)

Elementary	
School Hours	
8:20 am - 3:00 pm	
Wednesday Early Release	
12:50 PM	
Secondary	
CFVMS: 7:50 am -3:23 pm	
EVHS: 7:50-3:20	
Wednesday Early Release	
1:15 PM	
Holidays	
July 4	Holiday - Independence Day
September 2	Holiday - Labor Day
October 14	Holiday - Fall Break
November 27-29	Holiday - Thanksgiving Break
December 23 - January 3	Holiday - Winter Break
January 20	Holiday - Martin Luther King, Jr.
February 17	Holiday - President's Day
March 9-13	Holiday - Spring Break
April 10-13	Holiday - Spring Recess
May 25	Holiday - Memorial Day
Early Release (All Schools)	
8/28, 9/11, 9/25, 10/23, 11/6, 12/4, 1/15, 2/5, 4/1, 5/13	
Parent Teacher Conferences	
(Full Day - Scheduled conferences)	
October 30 and March 20	
Important Dates 2019 / 2020	
Mar-June 7 & July 22-Aug 9	Elementary Pre Registration
June 3-14 & July 22-Aug 9	CFVMS Pre Registration
June 3-14 & July 22-Aug 9	EVHS Pre-Registration (Online)
June 10 - Aug 9	New Teacher In-service
August 7, 8	Teacher In-service (No School for Students)
August 9th	Teacher Work Day (No school for students)
August 12	First Day of School (Gr: 1, 3, 5, 7, 9)
August 13	First Day of School (Gr: K, 2, 4, 6, 8, 10, 11, 12)
October 11	Teacher In-service (No School for Students)
January 6	Teacher In-service (No School)
May 22	Last Day of School - Early Release: K-6@12:00; 7-12@ 12:30
May 23	EVHS Graduation 10:00 AM at Edward Medina Gym
Grading Periods	
1st Quarter (8/12-10/16)	Progress Reports: 9/23
45 student days	Report Card Conference: Oct 30
2nd Quarter: (10/17-12/20)	Progress Report: 11/18
45 student days	Report Card sent home: Jan. 9
3rd Quarter (1/7-3/6)	Progress Reports: 2/10
42 student days	Report Card Conference: Mar 20
4th Quarter (3/16-5/20)	Progress Reports: 4/20
45/47 student days	Report Card sent home: May 22
179	School Instructional Days
184	Teacher Work Days

JANUARY 2020						
S	M	T	W	T	F	S
			1	2	3	4
	5	6	7	8	9	10
	11	12	13	14	15	16
	17	18	19	20	21	22
	23	24	25	26	27	28
	29	30	31			
FEBRUARY 2020						
S	M	T	W	T	F	S
						1
	2	3	4	5	6	7
	8	9	10	11	12	13
	14	15	16	17	18	19
	20	21	22	23	24	25
	26	27	28	29	30	
MARCH 2020						
S	M	T	W	T	F	S
	1	2	3	4	5	6
	7	8	9	10	11	12
	13	14	15	16	17	18
	19	20	21	22	23	24
	25	26	27	28	29	30
	31					
APRIL 2020						
S	M	T	W	T	F	S
			1	2	3	4
	5	6	7	8	9	10
	11	12	13	14	15	16
	17	18	19	20	21	22
	23	24	25	26	27	28
	29	30	31			
May 2020						
S	M	T	W	T	F	S
					1	2
	3	4	5	6	7	8
	9	10	11	12	13	14
	15	16	17	18	19	20
	21	22	23	24	25	26
	27	28	29	30	31	
JUNE 2020						
S	M	T	W	T	F	S
	1	2	3	4	5	6
	7	8	9	10	11	12
	13	14	15	16	17	18
	19	20	21	22	23	24
	25	26	27	28	29	30
	31					

Revised formatting 5/20/19



2019-2020 SCHOOL CALENDAR

(NM Pre K and 3Y/4Y Classrooms Only)

JULY 2019						
S	M	T	W	T	F	S
	1	2	3	4	5	6
	7	8	9	10	11	12
0	14	15	16	17	18	19
0	21	22	23	24	25	26
0	28	29	30	31		
AUGUST 2019						
S	M	T	W	T	F	S
				1	2	3
	4	5	6	7	8	9
3	11	12	13	14	15	16
12	18	19	20	21	22	23
18	25	26	27	28	29	30
SEPTEMBER 2019						
S	M	T	W	T	F	S
	1	2	3	4	5	6
	8	9	10	11	12	13
0	15	16	17	18	19	20
20	22	23	24	25	26	27
20	29	30				
OCTOBER 2019						
S	M	T	W	T	F	S
		1	2	3	4	5
	6	7	8	9	10	11
1	13	14	15	16	17	18
20	20	21	22	23	24	25
22	27	28	29	30	31	
NOVEMBER 2019						
S	M	T	W	T	F	S
					1	2
	3	4	5	6	7	8
0	10	11	12	13	14	15
18	17	18	19	20	21	22
18	24	25	26	27	28	29
DECEMBER 2019						
S	M	T	W	T	F	S
	1	2	3	4	5	6
	8	9	10	11	12	13
0	15	16	17	18	19	20
15	22	23	24	25	26	27
15	29	30	31			

PED Reporting Days	
Summer	Sept 3 (K3+)
40th Day	2nd Wed Oct (10/9)
80th Day	Dec 2
120th day	2nd Wed Feb (2/12)
EOY	after last day (5/22)

NMPREK	
School Hours	
8:20 am - 2:20 pm	
ETS Fairview, LNK, Alcalde	
3y/4y	
School Hours	
AM 8:00 am - 11:00 am	
PM 11:20 am - 2:20 am	
Holidays	
July 4	Holiday - Independence Day
September 2	Holiday - Labor Day
October 14	Holiday - Fall Break
November 27-29	Holiday - Thanksgiving Break
December 23 - January 3	Holiday - Winter Break
January 20	Holiday - Martin Luther King, Jr.
February 17	Holiday - Presidents' Day
March 9-13	Holiday - Spring Break
April 10-13	Holiday - Spring Recess
May 25	Holiday - Memorial Day
Important Dates 2019 / 2020	
Bring your parent to school day: Nov 6 & April 1	
Parent Teacher Conferences: Oct 30, March 20, & May 13 (Full day scheduled conferences. No school for students.)	
NMPREK Health and Developmental Screening Due 10/04	
Mar-June 7 & July 22-Aug 9	Elementary Pre Registration
Registration info available at www.k12espanola.org	
August 5 & 6	New Teacher In-service
August 7, 8	Teacher In-service (No school for students)
August 9th	Teacher Work Day (No school for students)
August 12-14	Home Visits (NMPREK)
August 15	First Day of School 3y/4y and NMPREK
October 11	Teacher In-service (No School for Students)
January 6	Teacher In-service (No School)
May 22	Last Day of School
May 23	EVHS Graduation 10:00 AM at Edward Medina Gym
Grading Periods	
1st Quarter (8/12-10/16)	Progress Reports 9/23 Parent/Teacher Conference 10/30
2nd Quarter: (10/17-12/20)	Progress Report: 11/18 Report Card sent home: Jan. 9
3rd Quarter (1/7-3/6)	Progress Reports: 2/10 Parent/Teacher Conference 3/20
4th Quarter (3/16-5/20)	Progress Reports: 4/20 Parent/Teacher Conference 5/13

6	Required Visits & PT Conferences
173	School Instructional Days
184	Teacher Work Days

JANUARY 2020						
S	M	T	W	T	F	S
			1	2	3	4
5	6	7	8	9	10	11
12	13	14	15	16	17	18
19	20	21	22	23	24	25
26	27	28	29	30	31	
FEBRUARY 2020						
S	M	T	W	T	F	S
						1
2	3	4	5	6	7	8
9	10	11	12	13	14	15
16	17	18	19	20	21	22
23	24	25	26	27	28	29
MARCH 2020						
S	M	T	W	T	F	S
1	2	3	4	5	6	7
8	9	10	11	12	13	14
15	16	17	18	19	20	21
22	23	24	25	26	27	28
29	30	31				
APRIL 2020						
S	M	T	W	T	F	S
			1	2	3	4
5	6	7	8	9	10	11
12	13	14	15	16	17	18
19	20	21	22	23	24	25
26	27	28	29	30		
May 2020						
S	M	T	W	T	F	S
					1	2
3	4	5	6	7	8	9
10	11	12	13	14	15	16
17	18	19	20	21	22	23
24	25	26	27	28	29	30
JUNE 2020						
S	M	T	W	T	F	S
31	1	2	3	4	5	6
7	8	9	10	11	12	13
14	15	16	17	18	19	20
21	22	23	24	25	26	27
28	29	30				

MES 3/7/19
Revised formatting 5/20/19

NM Pre K Inst. Hours: 1038
3Y/4Y Inst. Hours: 519



Graduation 2019

Congratulations to all of



our graduates!



EPS Family Resource Guide 2019–2020